

MARCH



ENDOMETRIOSIS AWARENESS MONTH

Welcome to the March edition of our IMAGENDO® Newsletter!

March for us is such a significant time of the year, being Endometriosis Awareness Month. Incredible contributions to sharing of knowledge, experiences and new research have occurred recently and the IMAGENDO® team are proud to be part of a community which values keeping everyone informed of the progress being made in understanding endometriosis.

If you would like to spread awareness of endometriosis, along with the news we bring you here, please direct family and friends to [EndoZone](#) or any of your local endo associations.

IMAGENDO® goes to Canada

Our Program Manager Dr Jodie Avery travelled to Hamilton, Ontario in Canada to set up IMAGENDO® at Dr Mathew Leonardi's clinic SUGO (Specialized Ultrasound in Gynecology & Obstetrics). This will be the first of many IMAGENDO® international collaborations and having Dr Leonardi's esteemed practice as one of our close collaborators is a big win for the team.

Seeing both sides of Canada whilst representing the IMAGENDO®, Dr Jodie Avery also presented at the Society for Reproductive Investigations conference in Vancouver.



Professor Louise Hull discusses some of the challenges faced with endometriosis

Prof. Louise Hull and the IMAGENDO® team were invited to talk to third year Bachelor of Health & Med. Science (Advanced) students at the University of Adelaide. Prof Hull spoke in the below video and some of the team went along to a workshop to answer the student's questions.

The goal was for the students to understand how to come up with new innovations in healthcare, and how to translate them into clinical practice.

This includes things like:

- understanding what the clinician's needs are, and what they are trying to do;
- identifying and evaluating potential solutions;
- the pathway through translation and commercialisation through to clinical adoption;
- regulatory issues

The students came up with some great ideas and Jodie, Ali, Nim and Rachel had a great time sharing their knowledge with the next generation of health workers and researchers.

[Watch video here](#)



Radio Health Journal

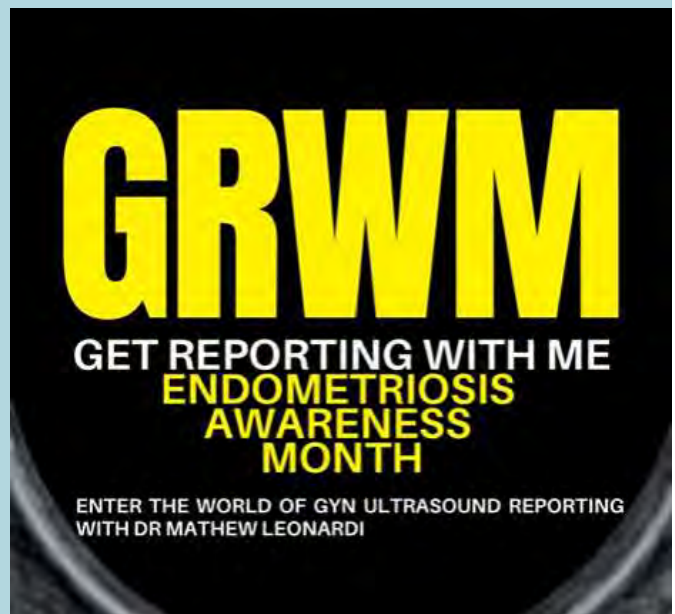
Dr. Jodie Avery was invited to speak to Radio Health Journal (USA) in their new segment *Pain Is Not Womanhood: Earlier Diagnosing For Endometriosis* and explains about why America's current process isn't aiding women with endometriosis.

[Listen here](#)

Get Reporting with Me (GRWM)

Dr. Mathew Leonardi's new Youtube series will take you through the process of reporting gynaecology ultrasounds with the latest and most evidence-based approach and terminology.

[Watch here](#)





New Paper Published

A paper recently published by Alison Deslandes and the team, titled *Are sonographers the future 'gold standard' in the diagnosis of endometriosis?* looks at the role sonographers in the future.

[Read here](#)

Parliament House - Endo Select Committee

The IMAGENDO® team were invited by Member for Waite Catherine Hutchesson to Parliament of South Australia where she successfully moved a motion to set up a Select Committee to examine the prevalence and effects of the endometriosis on local women and how to improve treatments and supports for them.



Yuan Zhang, Isabelle Burgess, Rachel Hosking, Jodie Avery, Catherine Hutchesson, Brittany Green, Misha Richards and Annie Simpson(not pictured)

Study Update

1,038

Participants

2

Countries

4

States

4

Stages of the
study

Important Reminder for Participants

To all our existing and new IMAGENDO® participants:

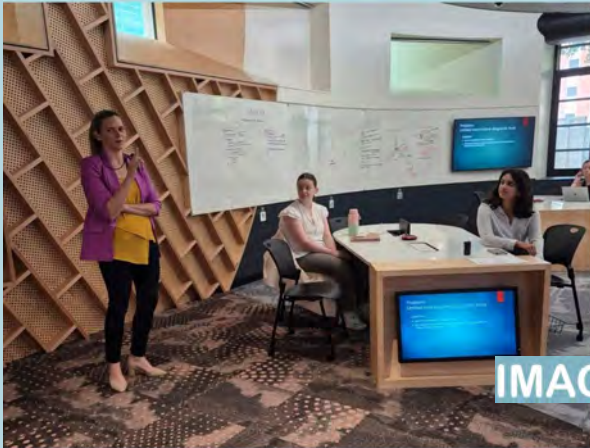
We've made some progressive changes to our data collection approach, as we are aware of the potential inherent bias within Artificial Intelligence (AI) systems. These changes come at a time when more demographic data is required to ensure the algorithm is void of any inherent bias for a sole population group. This additional information assists IMAGENDO® in representing and being a product for all.

Additional contribution by our participants will be required to reach this aim.

What we need: We will request five minutes of your time to complete a short survey. The survey will ask questions regarding your demographic information and medical symptoms prior to your participation.

Consistent with our data collection statement your identity and data remain anonymous. Participants were emailed **the survey link in January**, but if you have any questions regarding the nature of the survey or did not receive the link, please contact the IMAGENDO® team at endostudy@adelaide.edu.au or 0450 534 950.

We appreciate your time and contribution towards this important research.



IMAGEN

B.Health & Med. Science (Advanced) Talk
Alison Deslandes, Rachel Hosking, Nimantha Abeygunasekara



B.Health & Med. Science (Advanced) Talk
Jodie Avery



B.Health & Med. Science (Advanced) Talk
Alison Deslandes



Sofitel Adelaide's Endo High Tea
Alison Deslandes, Rachel Hosking, Jodie Avery, Louise Hull, Nim Abeygunasekara



IMAGENDO